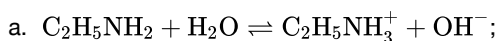

SL Paper 3

Ethylamine, $C_2H_5NH_2$, is a weak base.

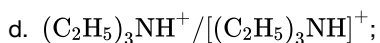
- a. State the equation for the reaction of ethylamine with water. [1]
- b. Explain why ethylamine has basic properties. [1]
- d. State the formula and deduce the shape of the positive ion (cation) formed when triethylamine, $(C_2H_5)_3N$, reacts with hydrochloric acid. [2]

Markscheme



Accept \rightarrow in place of \rightleftharpoons .

b. non-bonding/lone pair of electrons on the N atom (enables proton/ H^+ acceptance) / OWTTE;



tetrahedral;

Examiners report

- a. Majority of the candidates scored the mark for part (a). Lack of reference to N and lone pairs in part (b) penalized many candidates in scoring the mark. Most candidates were unable to explain the stronger basic properties diethylamine in part (c). Responses indicated weak understanding of the inductive effect of the alkyl groups. Many candidates did not address it the increased inductive effect due to two alkyl groups.
- b. Majority of the candidates scored the mark for part (a). Lack of reference to N and lone pairs in part (b) penalized many candidates in scoring the mark. Most candidates were unable to explain the stronger basic properties diethylamine in part (c). Responses indicated weak understanding of the inductive effect of the alkyl groups. Many candidates did not address it the increased inductive effect due to two alkyl groups.
- d. Majority of the candidates scored the mark for part (a). Lack of reference to N and lone pairs in part (b) penalized many candidates in scoring the mark. Most candidates were unable to explain the stronger basic properties diethylamine in part (c). Responses indicated weak understanding of the inductive effect of the alkyl groups. Many candidates did not address it the increased inductive effect due to two alkyl groups.

Steel is an alloy of iron, carbon and other metallic and non-metallic elements. Stainless steel contains about 18% chromium and 8% nickel. Explain why iron can form alloys with other transition metals.

Markscheme

their atoms/ions have similar/slightly different radii/size/densities/properties;

so do not disrupt crystal structure/metallic lattice significantly / *OWTTE*;

Examiners report

Part (b) was very poorly answered with most candidates providing general explanations of the formation of alloys.

Lanthanum, La, and antimony, Sb, form compounds with bromine that have similar formulas, LaBr_3 and SbBr_3 .

- a. Determine the type of bond present in SbBr_3 , showing your method. Use sections 8 and 29 of the data booklet. [2]
- b. Lanthanum has a similar electronegativity to group 2 metals. Explain, in terms of bonding and structure, why crystalline lanthanum bromide is brittle. [2]

Markscheme

- a. polar covalent

average electronegativity $\llcorner = \frac{1}{2}(3.0 + 2.0) \llcorner = 2.5$ **AND** electronegativity difference $\llcorner = 3.0 - 2.0 \llcorner = 1.0$

[2 marks]

- b. ionic bonding

OR

electrostatic forces between ions

«slight» movement brings ions of same charge adjacent to each other «causing the crystal to break»

OR

«slight» movement results in repulsion between layers «causing the crystal to break»

[2 marks]

Examiners report

a. [N/A]

b. [N/A]

The table summarizes some properties of graphite and graphene.

Property	Graphite	Graphene
Delocalization (Hybridization)	Yes (sp ²)	Yes (sp ²)
Electron mobility / cm ² V ⁻¹ s ⁻¹	1800	15 000–200 000
Average bond length / nm	0.142	0.142
Distance between layers / nm	0.335	Not applicable (N/A)
Tensile strength / Pascals	4.8–76 × 10 ⁶	1.3 × 10 ¹¹
Density / g cm ⁻³	1.80–2.23	(N/A)
Melting point at 1 × 10 ⁶ kPa / K	4300	4510
Specific surface area / m ² g ⁻¹	90	2630

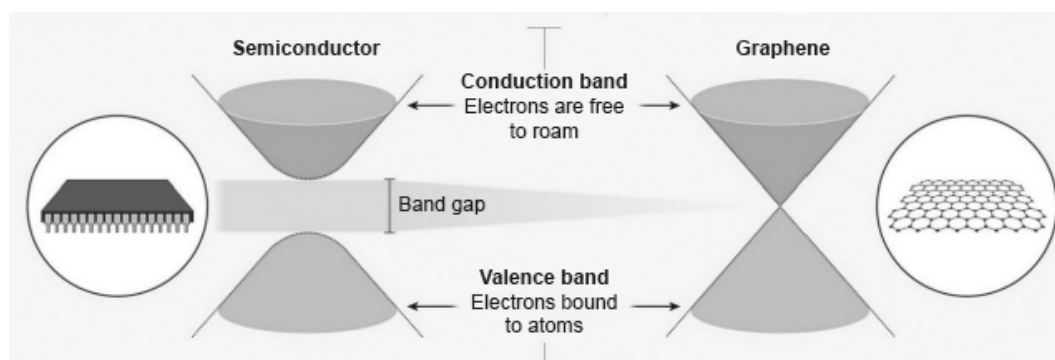
[Source: © Graphenea. Used with permission]

a.i. Graphene is two-dimensional, rather than three-dimensional, material. [2]

Justify this by using the structure of graphene and information from the table.

a.ii. Show that graphene is over 1600 times stronger than graphite. [1]

a.iii. Identify a value from the table which can be used to support the information about graphene given below. [1]



Electrons in a solid are restricted to certain ranges, or bands, of energy (vertical axis). In an insulator or semiconductor, an electron bound to an atom can break free only if it gets enough energy from heat or a passing photon to jump the “band gap”, but in graphene the gap is infinitely small.

[Source: www.nature.com]

b. Diamond, graphene, and graphite are all network solids. [2]

Suggest, giving a reason, the electron mobility of diamond compared to graphene.

c. The melting point of diamond at 1 × 10⁶ kPa is 4200 K (in the absence of oxygen). [2]

Suggest, based on molecular structure, why graphene has a higher melting point under these conditions.

Markscheme

a.i. consists of single/one sheet/layer «of carbon atoms»

graphene has no density measurement

OR

graphene has no distance between layers data

OR

graphene has large specific surface area «compared to graphite»

Do **not** accept “sp²” alone without reference to single/one sheet/layer.

Accept “thickness of one atom” **OR** “consists of a plane” for M1.

[2 marks]

a.ii. Any one of these alternatives:

ALTERNATIVE 1

$$\frac{1.3 \times 10^{11}}{76 \times 10^6}$$

$$1.7 \times 10^3 / 1711$$

ALTERNATIVE 2

$$1600 \times 76 \times 10^6 = 1.2 \times 10^{11} \text{ «is less than tensile strength of graphene»}$$

ALTERNATIVE 3

$$\frac{1.3 \times 10^{11}}{1600} = 8.1 \times 10^7 \text{ «is greater than upper end of tensile strength for graphite»}$$

Accept any value in the range 1700–27 083. Answer may be expressed in scientific notation or otherwise.

Accept any value calculated which is less than the graphene tensile strength based on a value chosen from within the 4.8–76 × 10⁶ range.

[1 mark]

a.iii. «graphene has a high electron mobility of» 15 000–200 000 «cm² V⁻¹ s⁻¹»

A specific value or range of values must be given.

Accept any value in the 15 000–200 000 «cm² V⁻¹ s⁻¹» range.

[1 mark]

b. smaller/zero

no delocalized electrons/electrons are bound/electrons not free to move/electrons not free to roam

OR

localized electrons «in sigma bonds»

OR

large band gap

Accept “diamond is a dielectric” **OR** “diamond does **not** conduct electricity” for M2.

Award **[1 max]** for just “immobile/less mobile”.

Award **[2]** for “electrons immobile «in diamond» due to the large band gap” **OR** “electrons «in diamond» immobile since electrons are localized «in the sigma bonds»”.

[2 marks]

c. shorter bonds in graphene

OR

bonds in graphene intermediate between single and double

OR

bond order in graphene is 1.33

OR

delocalization creates stronger bonds

OR

shorter bonds are stronger

stronger/shorter bonds require higher temperature/faster thermal motion to be altered

OR

stronger/shorter bonds require greater energy to be broken

[2 marks]

Examiners report

a.i. [N/A]

a.ii. [N/A]

a.iii. [N/A]

b. [N/A]

c. [N/A]

Sunflower oil contains stearic, oleic and linoleic fatty acids. The structural formulas of these acids are given in section 34 of the data booklet.

a. Explain which one of these fatty acids has the highest boiling point.

[2]

b. 10.0 g of sunflower oil reacts completely with 123 cm³ of 0.500 mol dm⁻³ iodine solution. Calculate the iodine number of sunflower oil to the nearest whole number.

[3]

Markscheme

a. stearic acid **AND** chain has no kinks/more regular structure

OR

stearic acid **AND** it has straight chain

OR

stearic acid **AND** no C=C/carbon to carbon double bonds

OR

stearic acid **AND** saturated

OR

stearic acid **AND** chains pack more closely together

stronger London/dispersion/instantaneous induced dipole-induced dipole forces «between molecules»

Accept "stearic acid **AND** greater surface area/electron density".

M2 can only be scored if stearic acid is correctly identified.

Accept "stronger intermolecular/van der Waals'/vdW forces".

[2 marks]

b. $\llcorner n(l_2) = 0.123 \text{ dm}^3 \times 0.500 \text{ mol dm}^{-3} \Rightarrow 0.0615 \llcorner \text{mol}\llcorner$

$\llcorner m(l_2) = 0.0615 \text{ mol} \times 253.8 \text{ g mol}^{-1} \Rightarrow 15.6 \llcorner \text{g}\llcorner$

$\llcorner \text{iodine number} = \frac{15.6 \text{ g} \times 100}{10.0 \text{ g}} \llcorner = 156$

Award **[3]** for correct final answer.

Iodine number must be a whole number.

Award **[2 max]** for 78.

[3 marks]

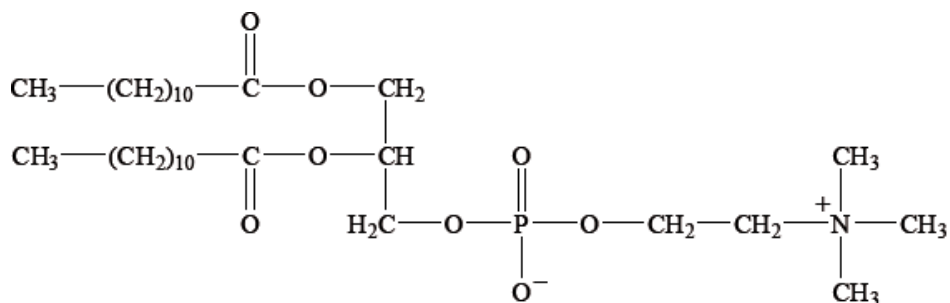
Examiners report

a. [N/A]

b. [N/A]

Many lipids are found in the human body. One type of lipid is a triglyceride.

Steroids and phospholipids are both classes of lipid found in the body. Cholesterol is a steroid. A structure of lecithin, a phospholipid, is shown below.



a. The formulas of some fatty acids are shown in Table 22 of the Data Booklet. State the equation for the reaction between glycerol and stearic acid to form a triglyceride. [3]

b.i. Compare the structures of the **two** fatty acids: linoleic and linolenic acids. [2]

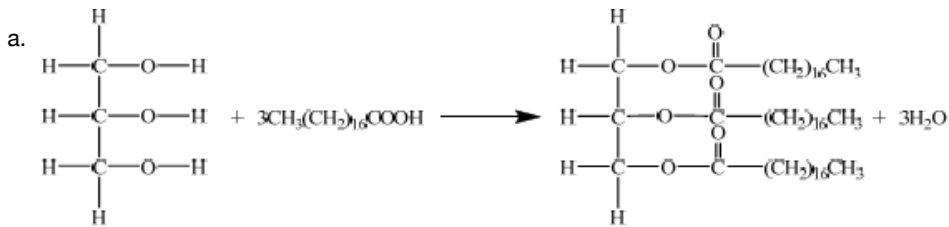
b.ii. State why these **two** fatty acids are so important in the human diet. [1]

c.i. Distinguish between *HDL* and *LDL* cholesterol. [2]

c.ii. Compare the composition of cholesterol with a phospholipid such as lecithin. [1]

c.iii. Determine whether cholesterol or lecithin is more soluble in water. [1]

Markscheme



correct structure of glycerol **and** correct formula of stearic acid;

correct structure of triglyceride;

$3\text{H}_2\text{O}$ **and** coefficient of 3 on stearic acid;

Accept displayed or condensed formulas for molecules.

b.i.both have first double bond on C9 with carbon / linoleic has an $\omega - 6$ $\text{C}=\text{C}$ double bond and linolenic acid has an $\omega - 3$ $\text{C}=\text{C}$ double bond;

linoleic acid has 2 double carbon bonds **and** linolenic acid 3 double carbon bonds;

b.ii.fatty acids are essential / body cannot synthesize them / OWTTE;

c.i.LDL is (a) larger (molecule) than HDL;

LDL transports cholesterol to arteries **and** HDL removes cholesterol from arteries;

LDL produced from saturated fats/trans fatty acids;

LDL increases the risk of heart disease/problems;

Accept converse statements for HDL.

Do not accept LDL is bad cholesterol and HDL is good cholesterol.

c.ii.cholesterol is composed of C, H and O only and phospholipid contains C, H, O, P and N;

c.iii.lecithin;

Examiners report

a. Candidates could not write an equation for the reaction between glycerol and stearic acid to form a triglyceride. Where candidates did write the correct equation they often did not balance the equation correctly.

b.i.In part (b) many candidates did not correctly recognize the difference in the number of carbon – carbon double bonds in the two fatty acids, nor the location of the double bonds and hence the significance of the omega-3 and omega-6 terminology.

b.ii.Some candidates correctly identified that these fatty acids cannot be synthesised by the body and hence are essential.

c.i.In part (c) candidates could not distinguish between HDL and LDL, often referring simply and inadequately to ‘good’ and ‘bad’ cholesterol. Candidates had great difficulty comparing the composition of cholesterol with lecithin. An elemental comparison was required.

c.ii.In part (c) candidates could not distinguish between HDL and LDL, often referring simply and inadequately to ‘good’ and ‘bad’ cholesterol. Candidates had great difficulty comparing the composition of cholesterol with lecithin. An elemental comparison was required.

c.iii.In part (c) candidates could not distinguish between HDL and LDL, often referring simply and inadequately to ‘good’ and ‘bad’ cholesterol. Candidates had great difficulty comparing the composition of cholesterol with lecithin. An elemental comparison was required.

Aluminium and iron are both widely used in modern society.

- c. Almost all iron is used in the form of an alloy. State the name of the most common type of iron alloy and the other element that is an essential component of these alloys. [1]

Name:

Other element:

- d. An early alloy of aluminium was Duralumin which contained small quantities of copper and magnesium. This is stronger and more rigid than pure aluminium. Explain on an atomic level why the addition of other elements has this effect. [2]

Markscheme

- c. *Name: steel and other element: carbon;*
- d. atoms/ions of the alloying element are a different size/larger/smaller;
prevents the layers of atoms/ions sliding across each other;

Examiners report

- c. This question was generally answered correctly.
- d. Part (d) proved to be most challenging although it deals with the fundamental idea of the behaviour of alloys.

-
- a. Linoleic acid is an essential fatty acid whose formula is given in Table 22 of the Data Booklet. Determine the mass of iodine, I₂, which reacts with 100 g of linoleic acid. [3]
- b. Fats, such as butter, are solid triglycerides. Explain why fats have a higher energy value than carbohydrates. [1]
- c. The formula of stearic acid is also given in Table 22 of the Data Booklet. Explain why linoleic acid has a lower melting point compared to stearic acid. [2]

Markscheme

- a. 2 mol of iodine reacts with 1 mol of linoleic acid;

$M_r = 253.80 \text{ g mol}^{-1}$ for iodine **and** $M_r = 280.50 \text{ g mol}^{-1}$ for linoleic acid;

$$\left(\frac{507.60 \times 100.00}{280.50} \right) = 180.96 \text{ (g)}/181 \text{ (g)};$$

Award **[3]** for correct final answer.

Allow 254 g mol^{-1} for iodine and $281/280 \text{ g mol}^{-1}$ for linoleic acid.

Award **[2 max]** for incorrect ratio calculation to give answers such as 90.4, 90.481, 90.7 (g) depending on M_r values used.

b. less oxidized (compared to carbohydrates) / fewer oxygen atoms (compared to carbohydrates);

c. C=C's in linoleic acid cause the chain to be more uneven/kinked;

linoleic acid cannot pack as closely as stearic acid;

intermolecular/van der Waal's/London/dispersion forces weaker in linoleic acid;

Accept converse argument for stearic acid.

Examiners report

a. In (a) the vast majority of candidates did not recognise that linoleic acid had two C=C double bonds and hence the ratio $n(\text{I}_2):n(\text{acid}) = 2:1$.

Candidates also made careless errors in calculating the molar mass of either/both iodine or/and linoleic acid.

b. Part (b) was answered well by about half of the candidates.

c. In Part(c) many candidates scored both marks, but there were cases which indicated poor preparation of candidates on this rather trivial question which appears so often in examinations.

Materials science involves understanding the properties of materials and applying those properties to desired structures.

a. Magnesium oxide, MgO, and silicon carbide, SiC, are examples of ceramic materials. State the name of the predominant type of bonding in each material. [1]

b. Predict the predominant type of bonding for a binary compound AB in which the electronegativity of both atoms is low. Use section 29 of the data booklet. [1]

Markscheme

a. MgO: ionic **AND** SiC: covalent

Accept "covalent network/network covalent" for "covalent" but not just "network".

b. metallic «bonding»

Examiners report

a. [N/A]

b. [N/A]

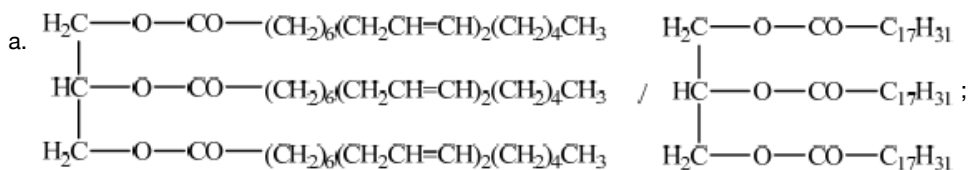
The formula of linoleic acid is given in Table 22 of the Data Booklet.

- a. Identify the structural formula of the triglyceride formed when three molecules of linoleic acid react with one molecule of glycerol (propane-1,2,3-triol), $\text{CH}_2\text{OHCHOHCH}_2\text{OH}$. [1]
- b. State the other product formed during this reaction. [1]
- c. Explain why the triglyceride formed from linoleic acid and glycerol is a liquid and not a solid at room temperature. [2]
- d. Describe how the triglyceride formed from linoleic acid and glycerol could be converted into a saturated fat and give any necessary conditions. [2]
- e. Other than the fact that it is a solid at room temperature, discuss **two** advantages and **two** disadvantages of a saturated fat compared to an unsaturated fat or oil. [4]

Advantages:

Disadvantages:

Markscheme



Do not accept R for $\text{C}_{17}\text{H}_{31}$.

Penalize for incorrect bond connectivity.

- b. water/ H_2O ;
- c. double bonds cause a “kink” in the hydrocarbon chain / unsaturated hydrocarbon chains cannot pack so closely together (as saturated);

attractive forces/London/dispersion/van der Waals/vdW/LDF/ /instantaneous/temporary induced dipole-induced dipole forces between the molecules are weaker / less energy required to overcome the attraction between the molecules;

- d. (d) addition of hydrogen/ H_2 / hydrogenation;

heat **and** catalyst/Zn/Cu/Ni/Pd/Pt;

Accept any temperature in range 140–225 °C.

- e. Advantages:

decreases rate of oxidation / makes it more stable / slows rancidification / has longer shelf life;

greater energy released per gram / OWTTE;

controls hardness/plasticity/stiffness;

Disadvantages:

increase risk of heart disease / increase low-density/LDL cholesterol;

does not contain essential/omega-3/omega-6 fatty acids;

hydrogenated fats might contain *trans*-fatty acids;

Examiners report

- a. Generally candidates struggled with the details of the triglyceride structure; very few were able to gain the mark for part (a). Almost all the candidates were able to state water as the other product and gain the mark in part (b). Candidates often missed the specific details for the answer to part (c); they were able to identify the presence of double bonds or unsaturation but had difficulty expanding and linking the idea to how this changed packing and intermolecular forces. For part (d) many candidates stated hydrogenation as the answer and scored one point but many were not able to state the two reaction conditions correctly. Most responses on advantages and disadvantages of saturated fats, part (e), were too general for example, affects your health. A common statement was 'better storage/ transport' as an advantage for saturated fats. Most candidates only scored one or two points for this question.
- b. Generally candidates struggled with the details of the triglyceride structure; very few were able to gain the mark for part (a). Almost all the candidates were able to state water as the other product and gain the mark in part (b). Candidates often missed the specific details for the answer to part (c); they were able to identify the presence of double bonds or unsaturation but had difficulty expanding and linking the idea to how this changed packing and intermolecular forces. For part (d) many candidates stated hydrogenation as the answer and scored one point but many were not able to state the two reaction conditions correctly. Most responses on advantages and disadvantages of saturated fats, part (e), were too general for example, affects your health. A common statement was 'better storage/ transport' as an advantage for saturated fats. Most candidates only scored one or two points for this question.
- c. Generally candidates struggled with the details of the triglyceride structure; very few were able to gain the mark for part (a). Almost all the candidates were able to state water as the other product and gain the mark in part (b). Candidates often missed the specific details for the answer to part (c); they were able to identify the presence of double bonds or unsaturation but had difficulty expanding and linking the idea to how this changed packing and intermolecular forces. For part (d) many candidates stated hydrogenation as the answer and scored one point but many were not able to state the two reaction conditions correctly. Most responses on advantages and disadvantages of saturated fats, part (e), were too general for example, affects your health. A common statement was 'better storage/ transport' as an advantage for saturated fats. Most candidates only scored one or two points for this question.
- d. Generally candidates struggled with the details of the triglyceride structure; very few were able to gain the mark for part (a). Almost all the candidates were able to state water as the other product and gain the mark in part (b). Candidates often missed the specific details for the answer to part (c); they were able to identify the presence of double bonds or unsaturation but had difficulty expanding and linking the idea to how this changed packing and intermolecular forces. For part (d) many candidates stated hydrogenation as the answer and scored one point but many were not able to state the two reaction conditions correctly. Most responses on advantages and disadvantages of saturated fats, part (e), were too general for example, affects your health. A common statement was 'better storage/ transport' as an advantage for saturated fats. Most candidates only scored one or two points for this question.

e. Generally candidates struggled with the details of the triglyceride structure; very few were able to gain the mark for part (a). Almost all the candidates were able to state water as the other product and gain the mark in part (b). Candidates often missed the specific details for the answer to part (c); they were able to identify the presence of double bonds or unsaturation but had difficulty expanding and linking the idea to how this changed packing and intermolecular forces. For part (d) many candidates stated hydrogenation as the answer and scored one point but many were not able to state the two reaction conditions correctly. Most responses on advantages and disadvantages of saturated fats, part (e), were too general for example, affects your health. A common statement was 'better storage/ transport' as an advantage for saturated fats. Most candidates only scored one or two points for this question.

Suggest, in terms of its structure, why vitamin D is fat-soluble using section 35 of the data booklet.

Markscheme

«mostly» non-polar

OR

hydrocarbon backbone

OR

only 1 hydroxyl «group so mostly non-polar»

Accept "alcohol/hydroxy" for "hydroxyl" but **not** "hydroxide".

[1 mark]

Examiners report

[N/A]

The structures of morphine, diamorphine and codeine are given in section 37 of the data booklet.

- a. Explain why diamorphine passes more readily than morphine through the blood-brain barrier. [2]
- b. Suggest a reagent used to prepare diamorphine from morphine. [1]
- c. Suggest **one** reason why codeine is available without prescription in some countries whilst morphine is administered under strict medical supervision. [1]

Markscheme

a. Any two of:

diamorphine has ester/ethanoate/acetate «groups» **AND** morphine has hydroxyl «groups»

diamorphine/ester/ethanoate/acetate groups less polar

diamorphine more soluble in lipids

Accept “alcohol/hydroxy” for “hydroxyl” but not “hydroxide”.

Accept “diamorphine non-polar”.

Accept converse statements.

[2 marks]

b. ethanoic/acetic anhydride

OR

ethanoyl/acetyl chloride

Accept other possible reagents, such as ethanoic/acetic acid or acetyl bromide.

Accept chemical formulas.

[1 mark]

c. morphine has a smaller therapeutic window

Accept converse statements.

Accept “codeine has lower activity” **OR** “codeine has lower risk of overdose” **OR** “codeine is less potent”.

Do **not** accept “lower abuse potential for codeine” **OR** “codeine less addictive” **OR** “codeine has a lower bioavailability”.

[1 mark]

Examiners report

a. [N/A]

b. [N/A]

c. [N/A]

Vitamins can be water-soluble or fat-soluble.

a. Explain, at the molecular level, why vitamin D is soluble in fats. Use section 35 of the data booklet.

[2]

b. State **one** function of vitamin D in the body.

[1]

Markscheme

a. «mainly» hydrocarbon/non-polar «structure»

forms London/dispersion/instantaneous induced dipole-induced dipole forces «with fats»

Accept “forms van der Waals’/vdW forces”.

Award [1 max] for “contains only one OH/hydroxyl **AND** cannot form «enough» H-bonds”.

b. helps absorb calcium

OR

helps build bones

OR

helps keep bones healthy

OR

helps block the release of parathyroid hormone

OR

helps in muscle function

OR

helps immune system function

OR

cell growth

OR

reduction of inflammation

OR

protection from osteoporosis

OR

prevents rickets

Accept *helps prevent colon/breast/prostate cancer.*

Accept *treat/prevent diabetes/heart disease/high blood pressure/multiple sclerosis.*

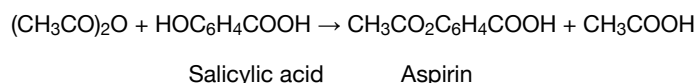
Accept *other correct answers.*

Examiners report

a. [N/A]

b. [N/A]

The mild analgesic aspirin can be prepared in the laboratory from salicylic acid.



After the reaction is complete, the product is isolated, recrystallized, tested for purity and the experimental yield is measured. A student's results in a single trial are as follows.

	Mass / g ± 0.001	Melting point / $^{\circ}\text{C} \pm 1$
Initial salicylic acid	1.552	
Crude product	1.398	106–114
Product after recrystallization	1.124	122–125

Literature melting point data: aspirin = 138–140 $^{\circ}\text{C}$

- a. Determine the percentage experimental yield of the product after recrystallization. The molar masses are as follows: $M(\text{salicylic acid}) = 138.13 \text{ g mol}^{-1}$, $M(\text{aspirin}) = 180.17 \text{ g mol}^{-1}$. (You do not need to process the uncertainties in the calculation.) [2]
- b. Suggest why isolation of the crude product involved the addition of ice-cold water. [1]
- c. Justify the conclusion that recrystallization increased the purity of the product, by reference to **two** differences between the melting point data of the crude and recrystallized products. [2]
- d. State why aspirin is described as a mild analgesic with reference to its site of action. [1]

Markscheme

a. **ALTERNATIVE 1:**

$$\text{«theoretical yield} = \frac{1.552 \text{ g}}{138.13 \text{ g mol}^{-1}} \times 180.17 \text{ g mol}^{-1} \Rightarrow 2.024 \text{ «g»}$$

$$\text{«experimental yield} = \frac{1.124 \text{ g}}{2.024 \text{ g}} \times 100 \Rightarrow 55.53 \text{ «\%»}$$

ALTERNATIVE 2:

$$\text{«}\frac{1.552 \text{ g}}{138.13 \text{ g mol}^{-1}}\text{»} = 0.01124 \text{ «mol salicylic acid/aspirin theoretical» } \mathbf{AND}$$

$$\text{«}\frac{1.124 \text{ g}}{180.17 \text{ g mol}^{-1}}\text{»} = 0.006239 \text{ «mol aspirin experimental»}$$

$$\text{«experimental yield} = \frac{0.006239 \text{ mol}}{0.01124 \text{ mol}} \times 100 \Rightarrow 55.51 \text{ «\%»}$$

Accept answers in the range 55.4 % to 55.7 %.

Award [2] for correct final answer.

- b. low temperature gives greater difference between solubility of aspirin and impurities

OR

«product» crystallizes out from cold solution/«ice-cold water/lower temperature» speeds up crystallization process

OR

aspirin/product has low solubility «in water» at low temperatures

c. [N/A]

- d. intercepts pain stimulus at source/acts at site of pain

OR

interferes with production of pain sensitizing substances/prostaglandins «at site of pain»

Examiners report

a. [N/A]

- b. [N/A]
c. recrystallized melting point is higher

OR

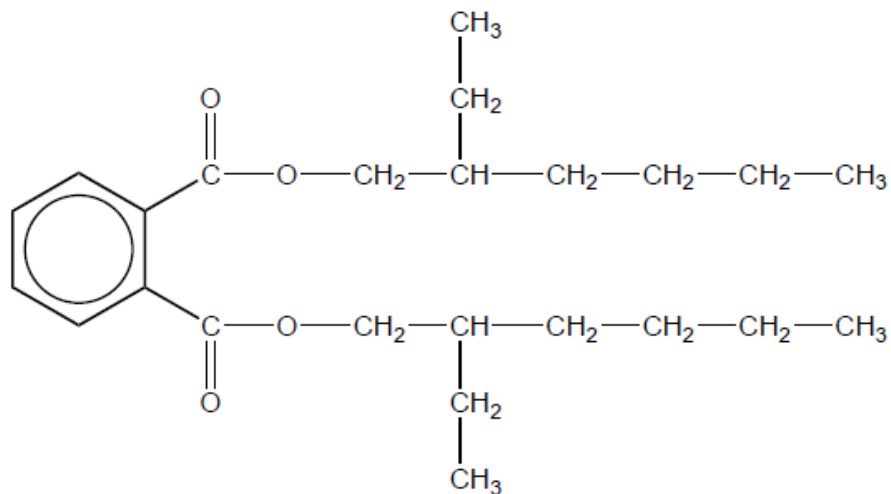
recrystallized melting point is closer to pure substance/literature value

smaller range of values

- d. [N/A]

Polymers are made up of repeating monomer units which can be manipulated in various ways to give structures with desired properties.

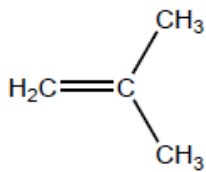
- a. (i) Draw the structure of 2-methylpropene. [2]
(ii) Deduce the repeating unit of poly(2-methylpropene).
- b. Deduce the percentage atom economy for polymerization of 2-methylpropene. [1]
- c. (i) Suggest why incomplete combustion of plastic, such as polyvinyl chloride, is common in industrial and house fires. [2]
(ii) Phthalate plasticizers such as DEHP, shown below, are frequently used in polyvinyl chloride.



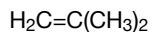
With reference to bonding, suggest a reason why many adults have measurable levels of phthalates in their bodies.

Markscheme

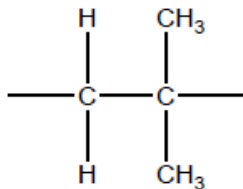
- a. i



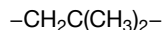
OR



- ii



OR



Continuation bonds needed for mark.

No penalty if square brackets present or "n" appears after the bracket/formula.

- b. «same mass of product as reactant, thus» 100«%»

Accept "less than 100%" only if a reason is given (eg, the catalyst is not converted into the product, or other reasonable answer).

- c. i

due to stability of plastics/strong covalent bonds

OR

low volatility preventing good mixing with oxygen «gas»

OR

lack of/insufficient oxygen

OR

plastics are often parts of devices with non-combustible components «which mechanically prevent the combustion of plastic components»

OR

PVC already partly oxidised «because some C–H bonds are replaced with C–Cl bonds», so it cannot produce enough heat for complete combustion

OR

many industrial/household materials contain additives that reduce their flammability/act as flame retardants

- ii

weakly bound to the PVC/no covalent bonds to PVC/only London/dispersion/instantaneous induced dipole-induced dipole forces between DEHP and PVC **AND** leach/evaporate «from PVC» to atmosphere/food chain

OR

has low polarity/contains non-polar hydrocarbon chains **AND** fat-soluble/deposits in the fatty tissues

OR

has unusual structural fragments/is a xenobiotic/difficult to metabolise **AND** stays in the body for a long time

Examiners report

a. [N/A]

b. [N/A]

c. [N/A]

Peptidase enzyme in the digestive system hydrolyses peptide bonds.

A tripeptide Ala-Asp-Lys was hydrolysed and electrophoresis of the mixture of the amino acids was carried out at a pH of 6.0. Refer to section 33 of the data booklet.

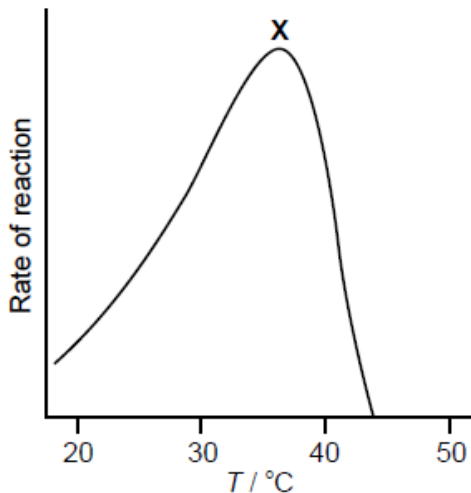
- a. Identify the type of metabolic process that occurs in the hydrolysis of the peptide during digestion.

[1]

b.i. Identify the **name** of the amino acid that does not move under the influence of the applied voltage. [1]

b.ii. Deduce, giving a reason, which amino acid will develop closest to the negative electrode. [2]

c. The breakdown of a dipeptide in the presence of peptidase was investigated between 18 °C and 43 °C. The results are shown below. [1]



Comment on the rate of reaction at temperature **X** in terms of the enzyme's active site.

d. The solubility of a vitamin depends on its structure. [1]

Identify the vitamin given in section 35 of the data booklet that is the most soluble in water.

e. Pollution from heavy metal ions has become a health concern. [1]

Outline how the presence of heavy metal ions decreases the action of enzymes.

f. Outline how lead ions could be removed from an individual suffering from lead poisoning. [1]

Markscheme

a. catabolism/catabolic

[1 mark]

b.i. alanine

Do **not** accept *ala*.

[1 mark]

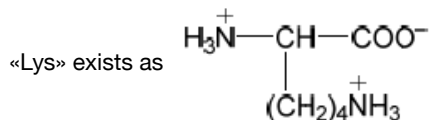
b.ii. Lys/lysine

pH «buffer» < pI «Lys»

OR

buffer more acidic than Lys «at isoelectric point»

OR



OR

«Lys» charged positively/has +1/+ «overall» charge «and moves to negative electrode»

Do **not** apply ECF from M1.

Accept converse argument.

Do **not** accept just "has H_3N^+ group" for M2 (as H_3N^+ is also present in zwitterion).

Do **not** penalize if COOH is given in the structure of lysine at pH 6 instead of COO^- .

[2 marks]

c. highest frequency of successful collisions between active site and substrate

OR

highest frequency of collisions between active site and substrate with sufficient energy/ $E \geq E_a$ **AND** correct orientation/conformation

OR

optimal shape/conformation of the active site «that matches the substrate»

OR

best ability of the active site to bind «to the substrate»

Accept "number of collisions per unit time" for "frequency".

Do **not** accept "all active sites are occupied".

[1 mark]

d. ascorbic acid/vitamin C

[1 mark]

e. react/bind/chelate with enzyme

OR

disrupt ionic salt bridges

OR

affect shape of tertiary/quaternary structures

OR

precipitate enzymes

OR

break/disrupt disulfide bridges/bonds

Do **not** accept "changes shape of active site" by itself.

[1 mark]

f. «use of» host-guest chemistry

OR

chelation «therapy»

Accept specific medication/chelating agent such as EDTA, $CaNa_2$ EDTA, succimer, D-penicillamine, dimercaprol.

[1 mark]

Examiners report

- a. [N/A]
- b.i. [N/A]
- b.ii. [N/A]
- c. [N/A]
- d. [N/A]
- e. [N/A]
- f. [N/A]

Lipids and carbohydrates contain the same elements but have different properties.

- a. List the building blocks of triglycerides and carbohydrates.

[1]

<p>Triglycerides:</p> <p>.....</p> <p>.....</p> <p>Carbohydrates:</p> <p>.....</p> <p>.....</p>

- b.i. The drain pipe of a kitchen sink can become clogged by fatty acids, such as linoleic acid, $C_{18}H_{32}O_2$, but not by the trisaccharide, raffinose, $C_{18}H_{32}O_{16}$, containing the same number of carbon atoms.

[2]

Explain why raffinose is far more water soluble than linoleic acid.

- b.ii. Solid fat triglycerides can also clog kitchen sink drains.

[2]

Explain how sodium hydroxide unblocks the drain.

- c. The amount of proteins, fats and carbohydrates determine the energy content of foods.

[2]

Explain why linoleic acid, $C_{18}H_{32}O_2$, is a more efficient energy storage molecule than raffinose, $C_{18}H_{32}O_{16}$.

Markscheme

- a. *Triglycerides:*

organic acid/fatty acid and glycerol/propane-1,2,3-triol

AND

Carbohydrates:

monosaccharides

Accept simple sugars.

[1 mark]

b.i. «water/aqueous solubility depends on forming many» H-bonds with water

raffinose has many hydroxyl/O–H/oxygen atoms/O «and forms many H-bonds» **AND** linoleic acid has few/one hydroxyl/O–H/oxygen atom/O/carboxyl group/ COOH/is largely non-polar «and cannot form many H-bonds»

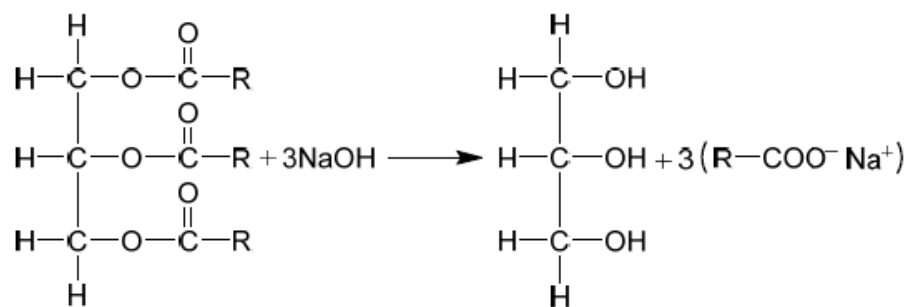
Accept statement which implies comparison.

[2 marks]

b.ii.«base» hydrolysis/saponification

OR

«produces glycerol and» soap/salt of the «fatty» acid



«products are» water soluble «and drain away»

Accept condensed formulas.

Accept non-balanced equation.

Accept "RCOONa".

[2 marks]

c. linoleic acid/C₁₈H₃₂O₂ combustion/oxidation more exothermic «per mol»

linoleic acid/C₁₈H₃₂O₂ has lower proportion/number of O atoms

OR

linoleic acid/C₁₈H₃₂O₂ is less oxidized

Accept converse arguments.

[2 marks]

Examiners report

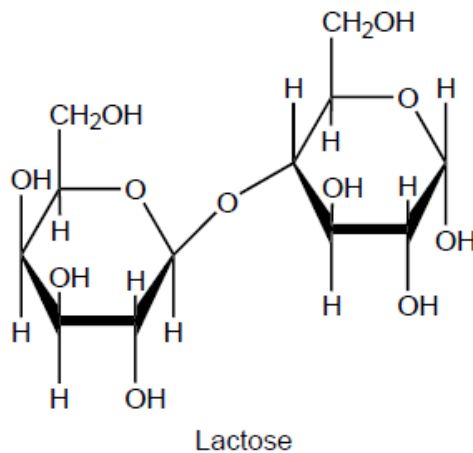
a. [N/A]

b.i. [N/A]

b.ii. [N/A]

c. [N/A]

Lactose is a disaccharide formed by the condensation reaction of the monosaccharides galactose and glucose.

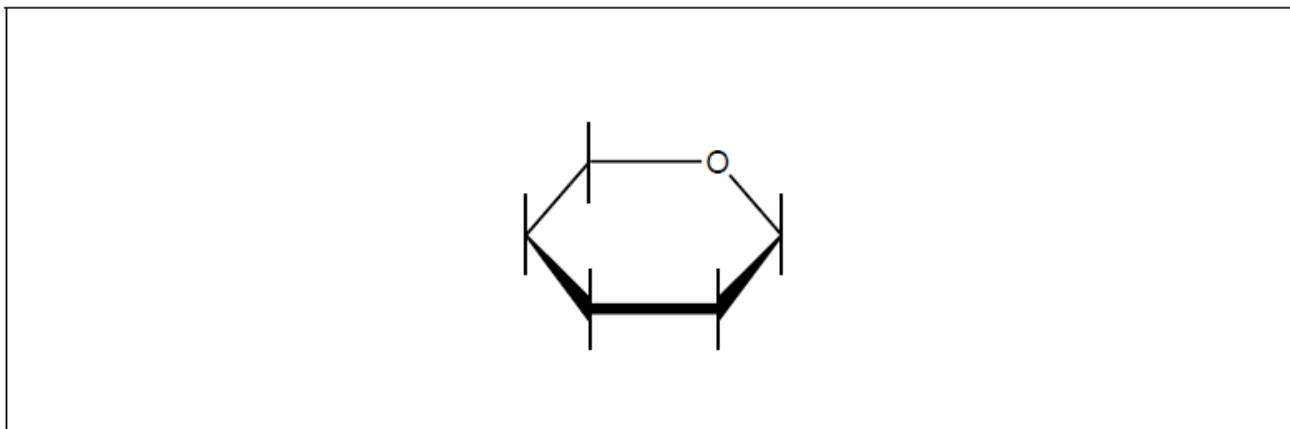


a. Describe what is meant by a condensation reaction.

[2]

b. Draw the structure of galactose on the skeleton provided.

[1]



c. Explain how the inclusion of carbohydrates in plastics makes them biodegradable.

[2]

Markscheme

a. «reaction in which» two reactants/molecules/functional groups bond/react «to form a larger molecule/single main product»

small/tiny molecule

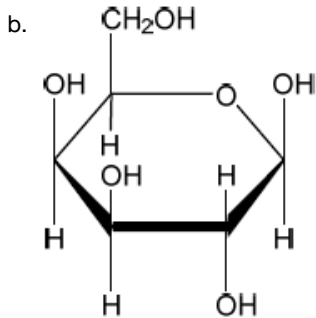
OR

H₂O formed

Accept formula or name of a specified small molecule other than water such as ammonia, ethanoic/acetic acid, ethanol, hydrogen sulfide etc. for M2.

Do **not** accept just "molecule formed".

Award **[1 max]** for an example giving an equation of a condensation reaction such as the formation of a disaccharide.



Accept “alpha” or “beta” form of galactose.

c. Any two of:

makes the plastic more hydrophilic/water soluble

carbohydrates are broken down/hydrolysed by bacteria/microorganisms

makes plastic more accessible to bacteria as holes/channels are created

OR

plastic of lower density is more permeable/susceptible to water/oxygen/heat/pressure

weakens intermolecular/London/dispersion/instantaneous induced dipole-induced dipole forces «between polymer chains in the plastic»

Accept “van der Waals/vdW” for “London” forces.

[Max 2 Marks]

Examiners report

- a. [N/A]
 b. [N/A]
 c. [N/A]

Solubility plays an important role in the bioavailability of drugs in the body.

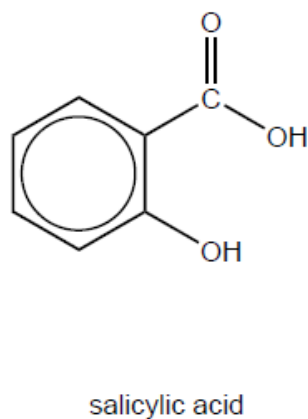
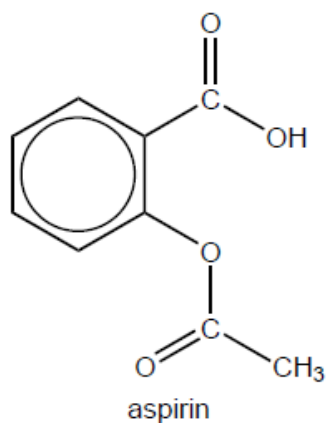
- a. Suggest why aspirin is **slightly** soluble in water. Refer to section 37 of the data booklet. [2]
- b. Formulate an equation for the conversion of aspirin to a more water soluble derivative. [1]
- c. A student prepares aspirin from salicylic acid in the laboratory, extracts it from the reaction mixture, ensures the sample is dry and determines its melting point. [2]

Substance	Melting point /°C
Student's aspirin sample	120–126
Pure aspirin	136

Suggest why the melting point of the student's sample is lower and not sharp compared to that of pure aspirin.

- d. Organic molecules can be characterized using infrared (IR) spectroscopy. [2]

Compare and contrast the infrared peaks above 1500 cm^{-1} in pure samples of aspirin and salicylic acid using section 26 of the data booklet.



One similarity:

.....

One difference:

.....

e. The pharmaceutical industry is one of the largest producers of waste solvents.

[1]

State a green solution to the problem of organic solvent waste.

Markscheme

a. presence of «large» benzene/arene ring **AND** non-polar/hydrophobic

OR

presence of «large» benzene/arene ring **AND** cannot form H-bond with water

contain COOH/carboxyl/-OH/hydroxyl «and ester group» **AND** polar/hydrophilic

OR

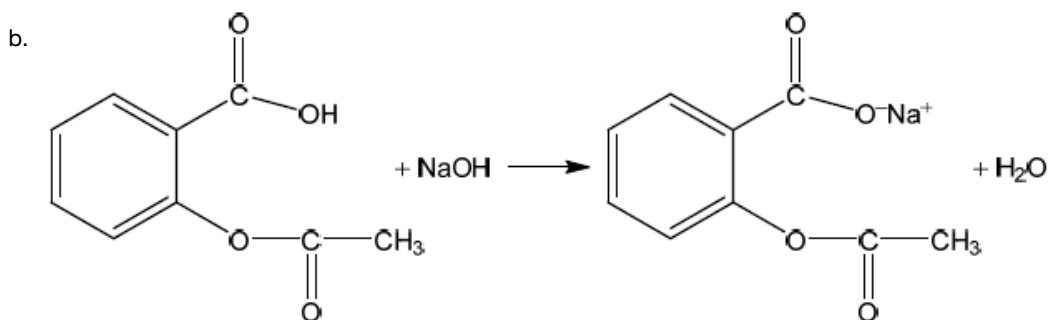
contain COOH/carboxyl/-OH/hydroxyl «and ester group» **AND** can form H-bonds with water

Accept "phenyl" for "benzene ring".

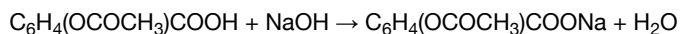
Accept "carboxylic acid" for "carboxyl".

Do **not** accept "alcohol" for "hydroxyl".

[2 marks]



OR



Charges (O^- and Na^+) not necessary to score the mark.

Accept net ionic equation.

Accept any strong base in place of NaOH.

[1 mark]

c. «student's» sample impure

lattice disrupted/not uniform «due to presence of impurities»

OR

fewer interparticle/intermolecular forces «due to presence of impurities»

Accept converse arguments.

[2 marks]

d. *One similarity:*

peak at 2500–3000 cm^{-1} / peak due to O–H/hydroxyl in carboxylic acids

OR

peak at 1700–1750 cm^{-1} / peak due to C=O/carbonyl

OR

peak at 2850–3090 cm^{-1} / peak due to C–H of arene

One difference:

peak at 3200–3600 cm^{-1} in salicylic acid / peak due to O–H in phenol in salicylic acid

OR

«two» peaks at 1700–1750 cm^{-1} in aspirin **AND** one peak «in the same area» in salicylic acid

Accept “peak at 1600 cm^{-1} for arene/benzene ring” – not in the data booklet.

Accept “2500–3600 cm^{-1} «overlapping absorptions of two O–H» in salicylic acid”.

Accept “stronger/broader/split peak at 1700–1750 cm^{-1} in aspirin”.

[2 marks]

e. «use of» alternative solvents such as supercritical/liquid CO_2

OR

use of water «as solvent»

OR

solvent-free reactions «for example, polymerization of propene»

OR

solid-state chemistry

OR

recycle «waste» solvents

OR

catalysis that leads to better/higher yield

OR

reducing number of steps

Do **not** accept political/regulatory solutions.

“catalysis” not sufficient for mark.

[1 mark]

Examiners report

- a. [N/A]
- b. [N/A]
- c. [N/A]
- d. [N/A]
- e. [N/A]

Lipids are an important part of the human diet.

- a. Fatty acids react with glycerol to form fats and oils. State the name of the chemical link formed in this reaction and the name of the other product. [1]

Name of the chemical link:
Name of the other product:

- b. The table below shows average figures for the percentage fatty acid composition of some common fats and oils. [6]

Source of fat or oil	% saturated fatty acids (total)	% monounsaturated fatty acid oleic	% polyunsaturated fatty acids	
			linoleic	linolenic
Beef fat	59	38	3	-
Coconut oil	90	8	2	-
Corn oil	25	26	47	2
Cotton seed oil	22	35	43	-
Olive oil	15	78	7	-
Soybean oil	14	28	50	8

- (i) Deduce, with a reason, which fat or oil from the table above has the lowest iodine number.
- (ii) Deduce, with a reason, which fat or oil from the table above is most likely to become rancid when exposed to the air.
- (iii) The **P/S index** of a fat or oil is the ratio of polyunsaturated fat to saturated fat present. It is sometimes used to compare the relative health benefits of different lipids in the diet. Calculate the P/S index of beef fat and soybean oil.

Beef fat:

Soybean oil:

(iv) Suggest why a P/S index of greater than 1 is considered beneficial to health.

(v) Cotton seed oil and corn oil have similar iodine numbers but the melting point of cotton seed oil is higher than that of corn oil. Suggest an explanation in terms of the structure and bonding in these two oils.

Markscheme

a. Name of the chemical link: ester/ethoxycarbonyl

AND

Name of the other product: water

Do **not** accept formulas.

Do **not** accept "esterification"

b. i

coconut oil **AND** lowest «percentage of» unsaturated fatty acids

OR

coconut oil **AND** smallest number of C=C bonds

OR

coconut oil **AND** highest «percentage of» saturated fatty acids

Accept "fats" for "fatty acids".

ii

soybean oil **AND** highest «percentage of» polyunsaturated fatty acids

OR

soybean oil **AND** greatest number of C=C bonds

OR

soybean oil **AND** lowest «percentage of» saturated fatty acids

Accept "fats" for "fatty acids".

iii

Beef fat: «P/S = $\frac{3}{59}$ = » 0.05

AND

Soybean oil: «P/S = $\frac{50+8}{14}$ => 4.1

iv

«higher proportion of» polyunsaturated fatty acids decrease risk of atherosclerosis/heart disease/cardiovascular disease/CVD

OR

«higher proportion of» polyunsaturated fatty acids which are less likely to be deposited on the walls of arteries «than saturated fatty acids»

Accept converse arguments.

Accept correct arguments in terms of HDL and LDL but not in terms of "good" and "bad" cholesterol.

Accept "fats" for "fatty acids".

v

Any two of:

cotton seed oil has «a higher proportion of» longer chain/greater molar mass fatty acids

molecules of cotton seed oil have greater surface area/have higher electron density

Accept "molecules of cotton seed oil are packed more closely/have more regular structure" for M2.

stronger London/dispersion/instantaneous induced dipole-induced dipole forces between chains in cotton seed oil

Accept converse arguments.

Accept "fats" for "fatty acids".

Examiners report

a. [N/A]

b. [N/A]

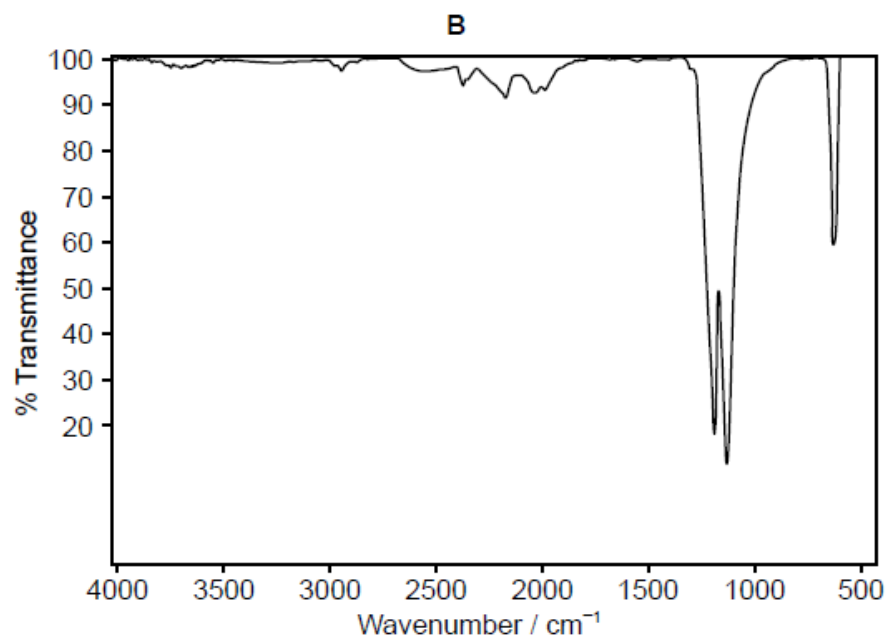
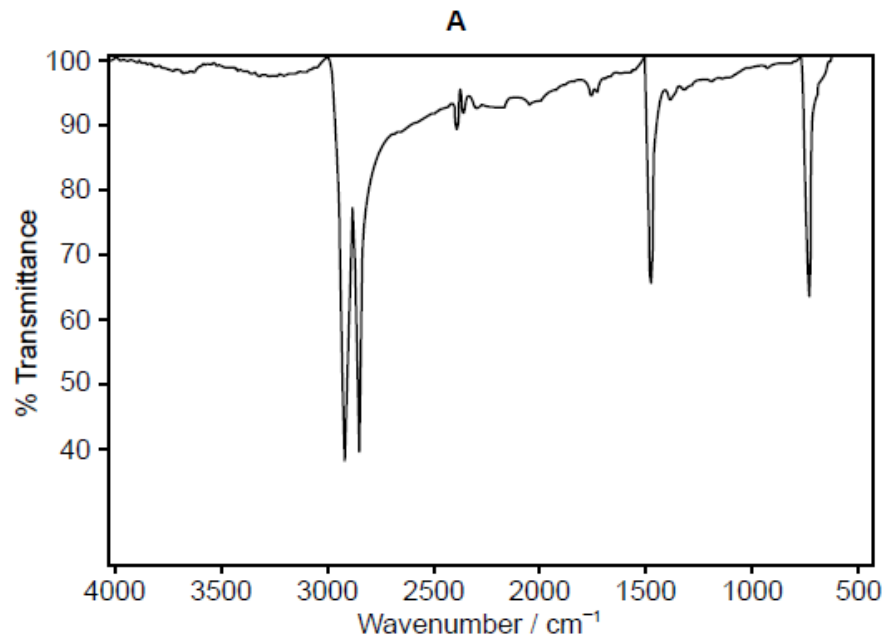
The development of materials with unique properties is critical to advances in industry.

Low density polyethene (LDPE) and high density polyethene (HDPE) are both addition polymers.

a. Outline two properties a substance should have to be used as liquid-crystal in a liquid-crystal display. [2]

b.i. Describe how the structures of LDPE and HDPE affect one mechanical property of the plastics. [2]

b.ii. One of the two infrared (IR) spectra is that of polyethene and the other of polytetrafluoroethene (PTFE). [1]



[Source: www.doitpoms.ac.uk]

Deduce, with a reason, which spectrum is that of PTFE. Infrared data is given in section 26 of the data booklet.

c. Many plastics used to be incinerated. Deduce an equation for the complete combustion of two repeating units of PVC, $(-\text{C}_2\text{H}_3\text{Cl}-)_2$. [2]

Markscheme

a. Any two of:

ability to form a LC phase

chemically stable

«LC phase that is» stable over suitable temperature range

polar

OR

being able to change orientation with applied electric field

rapid switching speed «responds to changes of voltage quickly»

Accept “ability of molecules to transmit light under certain conditions” **OR** “rodshaped molecules” **OR** “stable to light/not light sensitive”.

[Max 2 Marks]

b.i. branching in LDPE prevents close packing «of chains»

LDPE is more flexible/less rigid

OR

LDPE has lower «tensile» strength

Do **not** accept “difference in density”.

Award **[1 max]** for stating “branching in LDPE **AND** little/no branching in HDPE”.

b.ii **B AND** absence «of absorption of» C–H at 2850–3090 «cm⁻¹»

OR

B AND presence of «absorption of» C–F at 1000–1400 «cm⁻¹»

c. $(-C_2H_3Cl)_2 (s) + 5O_2 (g) \rightarrow 4CO_2 (g) + 2H_2O (l) + 2HCl (g)$

correct species in reactants and products

balanced

Accept “ $(-C_2H_3Cl)_2 (s) + 5.5O_2 (g) \rightarrow 4CO_2 (g) + 3H_2O (l) + Cl_2 (g)$ ”.

Award M2 only if M1 correct.

Examiners report

- a. [N/A]
- b.i. [N/A]
- b.ii. [N/A]
- c. [N/A]

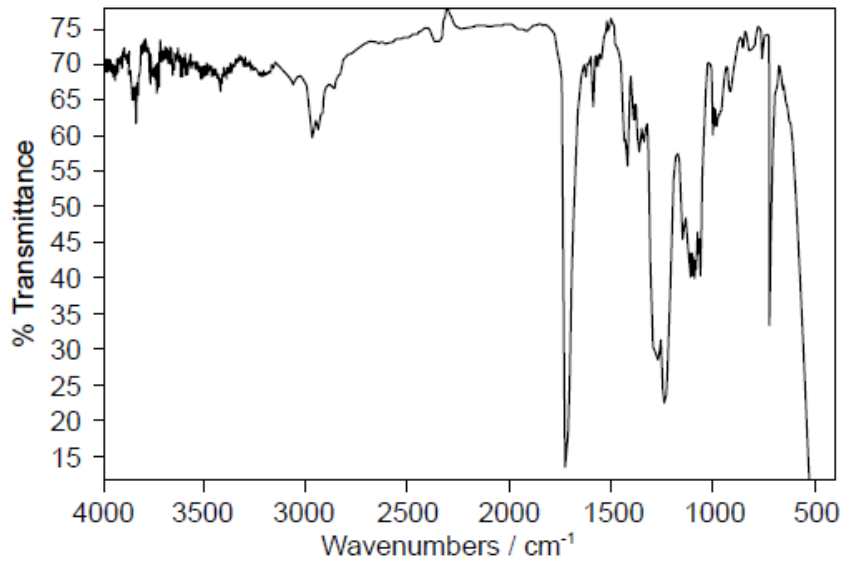
Infrared (IR) spectroscopy is often used for the identification of polymers, such as PETE, for recycling.

LDPE and high density polyethene (HDPE) have very similar IR spectra even though they have rather different structures and physical properties.

a. Below are the IR spectra of two plastics (**A** and **B**); one is PETE, the other is low density polyethene (LDPE).

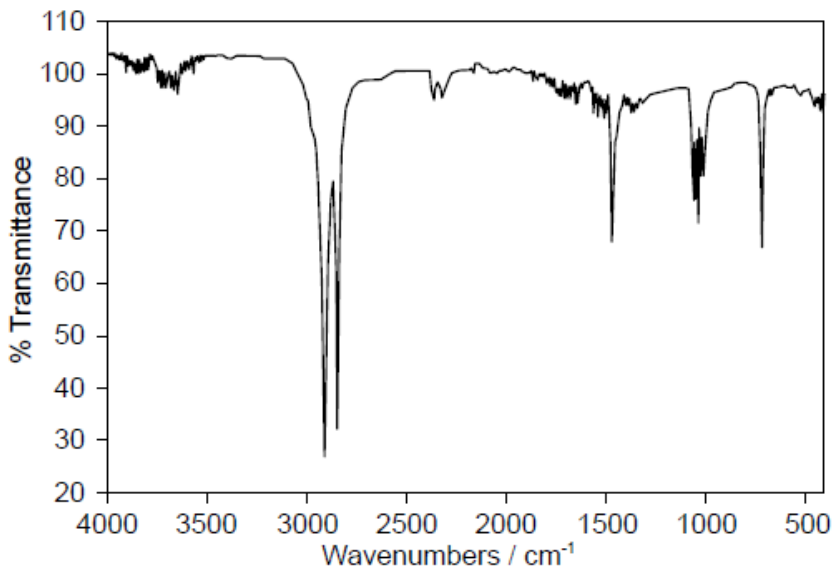
[3]

A



[Source: www.intechopen.com]

B



[Source: www.andersonmaterials.com]

Deduce, giving your reasons, the identity and resin identification code (RIC) of **A** and **B** using sections 26 and 30 of the data booklet.

A RIC:

.....
.....
.....

B RIC:

.....
.....
.....

b.i. Describe the difference in their structures.

[1]

b.ii. Explain why the difference in their structures affects their melting points.

[2]

Markscheme

a. A RIC: 1 **AND** B RIC: 4

ALTERNATIVE 1:

«only» PETE contains carbonyl/C=O/ester/COO groups
carbonyl groups absorb at 1700–1750 «cm⁻¹»

ALTERNATIVE 2:

LDPE contains more C–H bonds «than PETE»
C–H bonds absorb at 2850–3090 «cm⁻¹»

For either, accept specific frequencies in these ranges (eg 1735 «cm⁻¹» or 2900 «cm⁻¹»).

[3 marks]

b.i. HDPE less branched

OR

LDPE more branched

*Accept “no branching in HDPE **AND** branching in LDPE”.*

[1 mark]

b.ii. HDPE «polymer» chains/molecules can pack together more closely «than LDPE chains»

OR

HDPE «polymer» chains/molecules have a higher contact surface area «than LDPE chains»

stronger intermolecular/dispersion/London/van der Waals' forces in HDPE **AND** higher melting point

Accept converse arguments.

[2 marks]

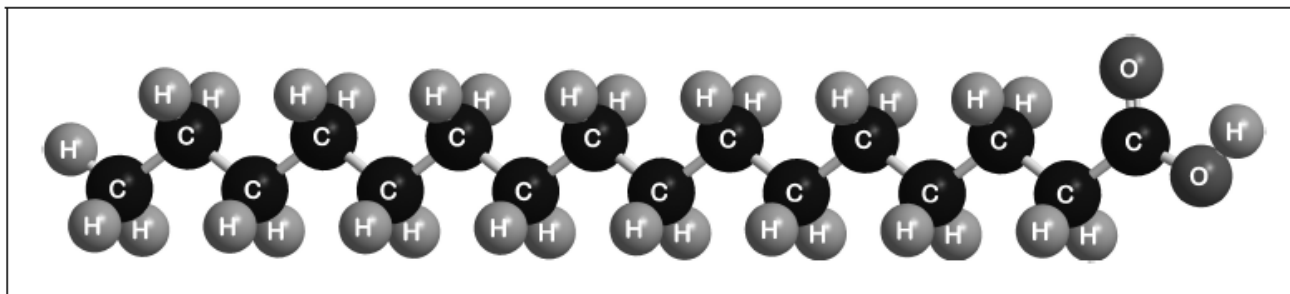
Examiners report

a. [N/A]

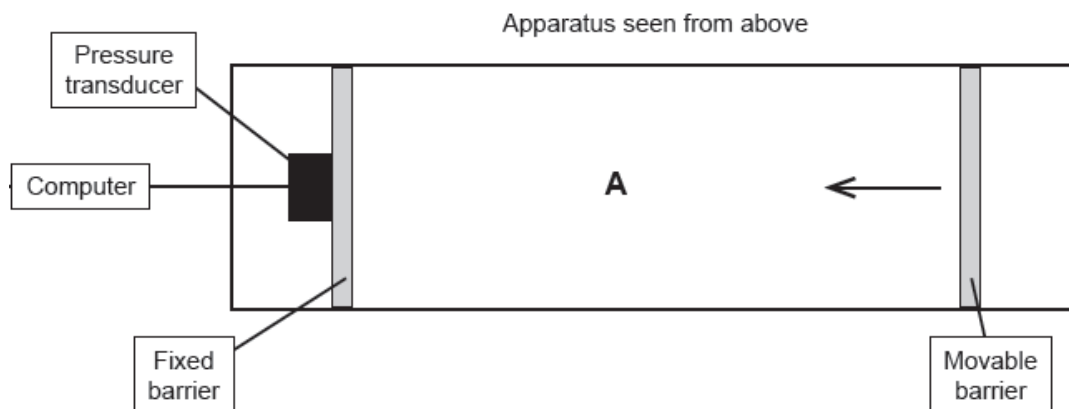
b.i. [N/A]

b.ii. [N/A]

Palmitic acid has a molar mass of 256.5 g mol⁻¹.

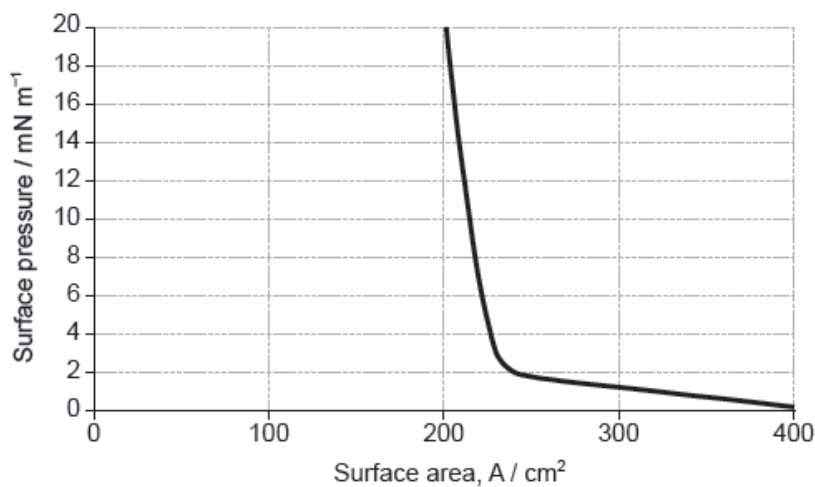


The apparatus in the diagram measures the surface pressure created by palmitic acid molecules on the surface of water. This pressure is caused by palmitic acid molecules colliding with the fixed barrier. The pressure increases as the area, **A**, available to the palmitic acid is reduced by the movable barrier.



[Source: Physical Chemistry Chemical Physics, 2001, 3, 4774-4783 -
Reproduced by permission of The Royal Society of Chemistry]

When a drop of a solution of palmitic acid in a volatile solvent is placed between the barriers, the solvent evaporates leaving a surface layer. The graph of pressure against area was obtained as the area **A** was reduced.



[Source: Influence of Lecithin on Structure and Stability of Parenteral Fat Emulsions,
Christoph Wabel, 1998, Figure 34. Used with permission]

a.i. Part of this molecule is hydrophilic (bonds readily to water) and part hydrophobic (does not bond readily to water). Draw a circle around all of the [1]
hydrophilic part of the molecule.

a.ii. When a small amount of palmitic acid is placed in water it disperses to form a layer on the surface that is only one molecule thick. Explain, in [2]
terms of intermolecular forces, why this occurs.

b.i. Suggest why there is a small increase in the surface pressure as the area is reduced to about 240 cm^2 , but a much faster increase when it is further reduced. [2]

Above about 240 cm^2 :

.....
.....
.....

At less than about 240 cm^2 :

.....
.....
.....

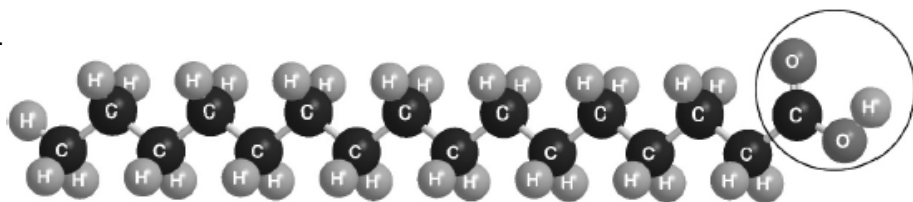
b.ii. The solution of palmitic acid had a concentration of $0.0034 \text{ mol dm}^{-3}$. Calculate the number of molecules of palmitic acid present in the 0.050 cm^3 drop, using section 2 of the data booklet. [2]

b.iii. Assuming the sudden change in gradient occurs at 240 cm^2 , calculate the area, in cm^2 , that a single molecule of palmitic acid occupies on surface of the water. [1]

If you did not obtain an answer for (b)(ii) use a value of 8.2×10^{16} , but this is not the correct answer.

Markscheme

a.i.



Must cut $\text{CH}_2\text{-CO}$ bond **AND** enclose all of the -COOH group.

[1 mark]

a.ii. Any two of:

$\text{-COOH/CO/OH/carboxylate/carboxyl/hydroxyl/hydroxy}$ group forms hydrogen bonds/H-bonds to water

London/dispersion/instantaneous induced dipole-induced dipole forces occur between hydrocarbon chains

hydrocarbon chain cannot form hydrogen bonds/H-bonds to water

strong hydrogen bonds/H-bonds between water molecules exclude hydrocarbon chains «from the body of the water»

Accept "hydrophilic part/group forms hydrogen bonds/H-bonds to water".

Accept "hydrophobic section" instead of "hydrocarbon chain".

Award [1 max] for answers based on "the -COOH group being polar **AND** the hydrocarbon chain being non-polar".

[2 marks]

b.i. Above about 240 cm^2 :

greater collision frequency/collisions per second between «palmitic acid» molecules and the barrier «as area reduced»

At less than about 240 cm^2 :

molecules completely cover the surface

OR

there is no space between molecules

OR

force from movable barrier transmitted directly through the molecules to the fixed barrier

OR

«palmitic acid» molecules are pushed up/down/out of layer

For both M1 and M2 accept “particles” for “molecules”.

For M1 accept “space/area between molecules reduced” **OR** “molecules moving closer together”.

[2 marks]

b.ii amount of acid = $5.0 \times 10^{-5} \text{ dm}^3 \times 0.0034 \text{ mol dm}^{-3} = 1.7 \times 10^{-7} \text{ «mol»}$

number of molecules = $1.7 \times 10^{-7} \text{ mol} \times 6.02 \times 10^{23} \text{ mol}^{-1} \Rightarrow 1.0 \times 10^{17}$

Award **[2]** for correct final answer.

Award **[1]** for “ 1.0×10^{20} ”.

[2 marks]

b.iii area = $\frac{240 \text{ cm}^2}{1.0 \times 10^{17}} \Rightarrow 2.4 \times 10^{-15} \text{ «cm}^2\text{»}$

[1 mark]

Examiners report

a.i. [N/A]

a.ii. [N/A]

b.i. [N/A]

b.ii. [N/A]

b.iii. [N/A]